



GAT MONTHLY MEMBERSHIP PROGRESS REPORT

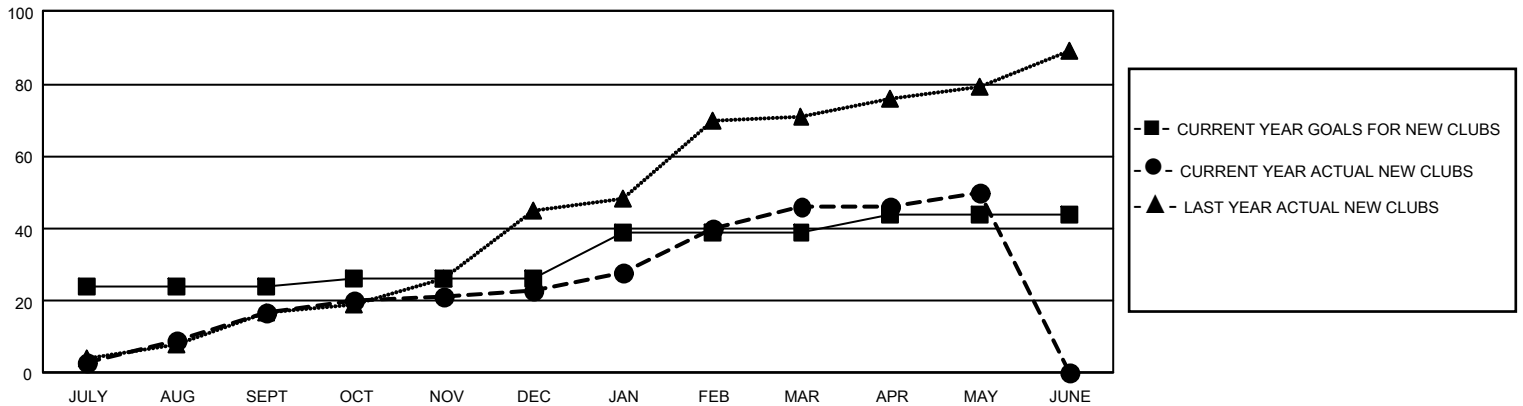
Results as of: 5/31/2025

GMT Constitutional Area 6 - I, Group H

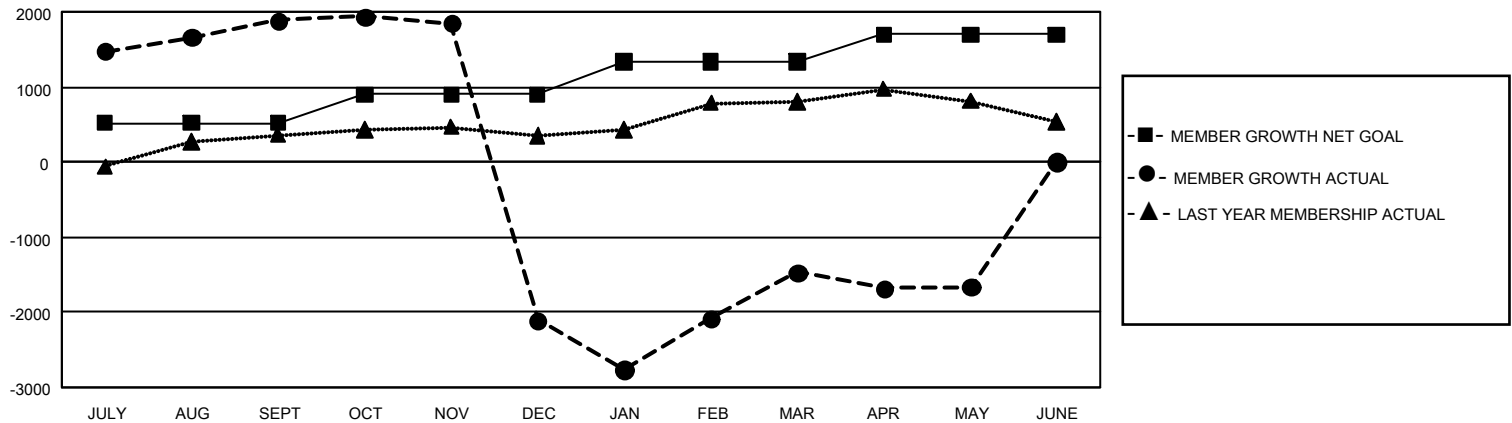
REPORT DOES NOT INCLUDE CLUBS IN UNDISTRICTED AREAS.

Clubs				Members			
RESULTS FOR 2024-2025				RESULTS FOR 2024-2025			
QUARTER	NEW CLUB GOAL	NEW CLUBS	DROPPED CLUBS	QUARTER	MEMBER GROWTH NET GOAL	MEMBER GROWTH ACTUAL	DROPPED MEMBERS ACTUAL (including transfers)
JULY/AUG/SEPT	72	17	5	JULY/AUG/SEPT	516	2,695	560
OCT/NOV/DEC	6	6	85	OCT/NOV/DEC	385	1,244	4,537
JAN/FEB/MAR	39	23	23	JAN/FEB/MAR	430	3,125	1,601
APR/MAY/JUNE	15	4	3	APR/MAY/JUNE	370	1,007	804

GOALS AND ACTUAL NEW CLUBS CUMULATIVE



GOALS AND ACTUAL MEMBERS CUMULATIVE



DROPPED CLUBS: 116

455 CLUBS OF 850 ADDED 1 OR MORE NEW MEMBERS

GENDER DISTRIBUTION

MALE	18,189 (62.16%)
FEMALE	11,070 (37.83%)
NON BINARY	0 (0.00%)
PREFER NOT TO ANSWER	4 (0.01%)

DROPPED MEMBERS

DECEASED	86
CLUB CANCELLED	3,043
OTHER	4,333
TOTAL	7,462

[CLICK HERE FOR CUMULATIVE MEMBERSHIP DATA](#)

TOTAL FAMILY UNIT MEMBERS 15,620

FAMILY MEMBERS PAYING HALF DUES 9,758